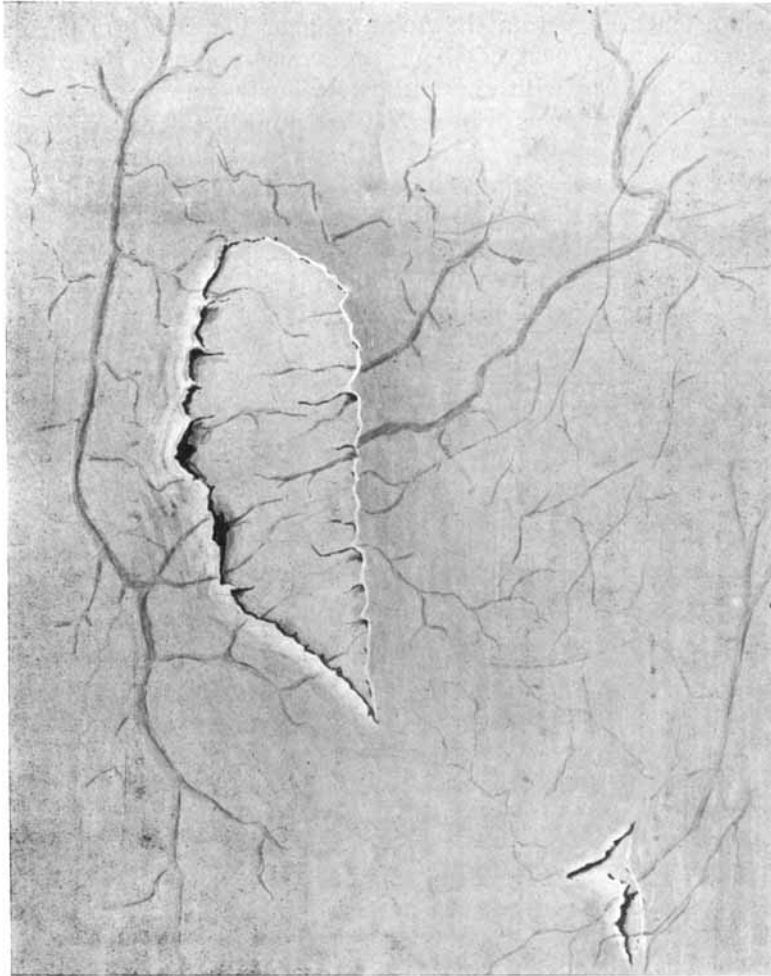


**Partial Rupture of an Ovarian Cyst weighing 32 pounds
with Great Loss of Blood in a Girl 15 years of age.**

By PALMER FINDLEY, M.D., F.A.C.S.,
*Professor of Gynæcology, College of Medicine, University of
Nebraska.*



Rupture of inner lining of cyst involving branches of blood vessels. Escape of large quantity of blood within cyst. Weight of cyst 32 pounds.

Miss B., age 15, a girl of unusual intelligence, thought herself perfectly well until two weeks before admission to the hospital when she began to complain of persistent headache and backache,

together with general lassitude. A few days later the attention of her mother was called to the enlargement of the abdomen. On examination the abdomen was found to be enormously distended with fluid; breathing was interfered with and the heart's action was embarrassed. She was very anæmic (hæmoglobin 40%).

On February 4 1916, the abdomen was tapped and about six litres of bloody fluid withdrawn. Forty-eight hours later an incision, extending from the pubis to near the ensiform cartilage, was made, and a cyst of the right ovary removed intact which weighed, together with the fluid previously removed, thirty-two pounds. The cyst was thin-walled and multilocular. Within the cyst was about one litre of clotted blood and the remaining fluid was dark as grape juice. There was no twist of the pedicle and no evidence of malignancy.

Splitting the cyst open the origin of the escaped blood was found in a rent through the inner lining of the cyst which involved branches of arteries. The rent was probably the result of rapid distention of the cyst. With the escape of the blood within the cyst came rapid enlargement of the cyst, acute anæmia and general debility.